



Gaps Indicator

Display gaps.

Working on all timeframes.

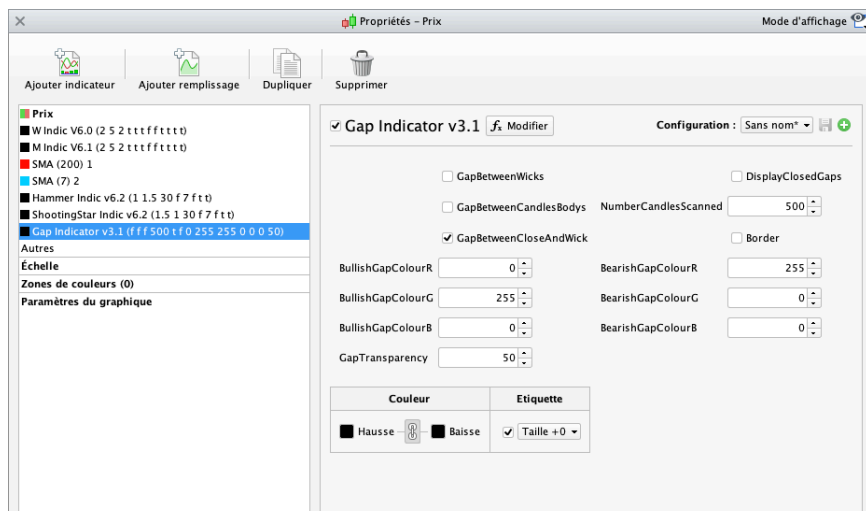
You can find all our instructions in video format on our Youtube channel (english subtitles available):

<https://youtu.be/ileodJ55zuw>

I. User Guide

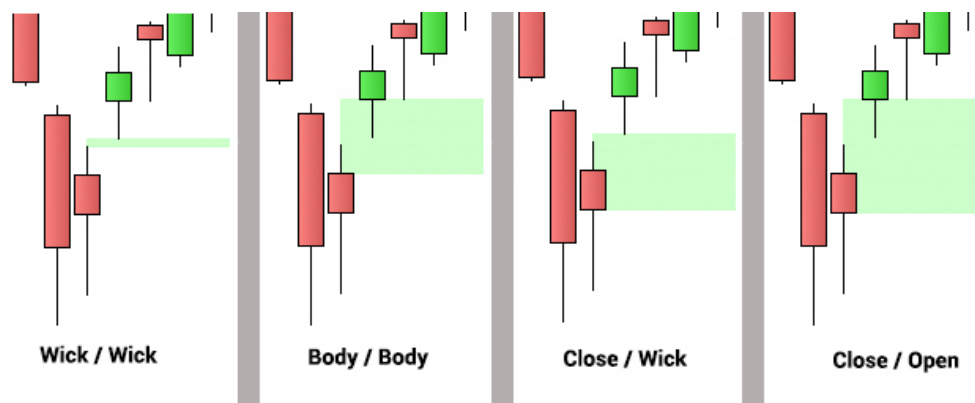
The indicator displays bullish and bearish gaps.

Display depends on the settings available in the configuration menu :



The values shown above are given as example and do not constitute an optimal or recommended setting, everyone should find his own settings.

- GapBetweenWicks = displays gaps between candles wicks.
Checked = ON / Unchecked = OFF,
- GapBetweenCandlesBodys = displays gaps between candlesticks bodys.
Checked = ON / Unchecked = OFF,
- GapBetweenCloseAndWick = displays gaps between close and the wick of the next candlestick. Checked = ON / Unchecked = OFF,
- GapBetweenCloseAndWick = displays gaps between close and the open of the next candlestick. Checked = ON / Unchecked = OFF,



- DisplayClosedGaps = display closed gaps. Checked = ON / Unchecked = OFF,
- NumberCandlesScanned = number of candlesticks scanned,
- Border = display border on the gap rectangle. Checked = ON / Unchecked = OFF,
- BullishGapColorR / BullishGapColorG / BullishGapColorB = bullish gaps color code to modify the display color. See RGB table below.
- BearishGapColorR / BearishGapColorG / BearishGapColorB = bearish gaps color code to modify the display color. See RGB table below.
- GapTransparency = display transparency.
- GapFillingProgress = the display follows the gap filling progress. The gap displayed corresponds to the part still open.
Checked = ON / Unchecked = OFF.

aliceblue (240, 248, 255)	antiquewhite (250, 235, 215)	aqua (0, 255, 255)	aquamarine (127, 255, 212)	azure (240, 255, 255)	beige (245, 245, 220)	bisque (255, 228, 196)
black (0, 0, 0)	blanchedalmond (255, 235, 205)	blue (0, 0, 255)	blueviolet (138, 43, 226)	brown (165, 42, 42)	burlywood (222, 184, 135)	cadetblue (95, 158, 160)
chartreuse (127, 255, 0)	chocolate (210, 105, 30)	coral (255, 127, 80)	cornflowerblue (100, 149, 237)	cornsilk (255, 248, 220)	crimson (220, 20, 60)	cyan (0, 255, 255)
darkblue (0, 0, 139)	darkcyan (0, 0, 139, 139)	darkgoldenrod (184, 134, 11)	darkgray (169, 169, 169)	darkgreen (0, 100, 0)	darkkhaki (189, 183, 107)	darkmagenta (139, 0, 139)
darkolivegreen (85, 107, 47)	darkorange (255, 140, 0)	darkorchid (153, 50, 204)	darkred (128, 0, 0)	darksalmon (233, 150, 122)	darkseagreen (143, 188, 143)	darkslateblue (72, 61, 139)
darkslategray (47, 79, 79)	darkturquoise (0, 206, 208)	darkviolet (148, 0, 211)	deeppink (255, 20, 147)	deepskyblue (0, 191, 255)	dimgray (105, 105, 105)	dodgerblue (30, 144, 255)
firebrick (178, 34, 34)	floralwhite (255, 250, 240)	forestgreen (34, 139, 34)	fuchsia (255, 0, 255)	gainsboro (220, 220, 220)	ghostwhite (248, 248, 255)	gold (255, 215, 0)
goldenrod (218, 165, 32)	gray (128, 128, 128)	green (0, 128, 0)	greenyellow (173, 255, 47)	honeydew (240, 255, 240)	hotpink (255, 105, 180)	indianred (205, 92, 92)
indigo (75, 0, 130)	ivory (255, 255, 240)	khaki (240, 230, 140)	lavender (230, 230, 250)	lavenderblush (255, 240, 245)	lawngreen (124, 252, 0)	lemonchiffon (255, 250, 205)
lightblue (173, 216, 230)	lightcoral (240, 128, 128)	lightcyan (224, 255, 255)	lightgoldenrodyellow (250, 250, 210)	lightgreen (144, 238, 144)	lightgray (211, 211, 211)	lightpink (255, 182, 193)
lightsalmon (255, 160, 122)	lightseagreen (32, 178, 170)	lightskyblue (135, 206, 250)	lightslategray (119, 136, 153)	lightsteelblue (176, 196, 222)	lightyellow (255, 255, 224)	lime (0, 255, 0)
limegreen (50, 205, 50)	linen (250, 240, 230)	magenta (255, 0, 255)	maroon (128, 0, 0)	mediumaquamarine (102, 205, 170)	mediumblue (0, 0, 205)	mediumorchid (186, 85, 211)
mediumpurple (147, 112, 216)	mediumseagreen (60, 179, 113)	mediumslateblue (123, 104, 238)	mediumspringgreen (0, 250, 154)	mediumturquoise (72, 209, 204)	mediumvioletred (199, 21, 133)	midnightblue (25, 25, 112)
mintcream (245, 255, 250)	mistyrose (255, 228, 225)	moccasin (255, 228, 181)	navajowhite (255, 222, 173)	navy (0, 0, 128)	oldlace (253, 245, 230)	olive (128, 128, 0)
olivedrab (104, 142, 35)	orange (255, 165, 0)	orangered (255, 69, 0)	orchid (218, 112, 214)	palegoldenrod (238, 232, 170)	palegreen (152, 251, 152)	paleturquoise (175, 238, 238)
palevioletred (216, 112, 147)	papayawhip (255, 239, 213)	peachpuff (255, 218, 185)	peru (205, 133, 63)	pink (255, 192, 203)	plum (221, 160, 221)	powderblue (176, 224, 230)
purple (128, 0, 128)	red (255, 0, 0)	rosybrown (188, 143, 143)	royalblue (65, 105, 225)	saddlebrown (139, 69, 19)	salmon (250, 128, 114)	sandybrown (244, 164, 96)
seagreen (46, 139, 87)	seashell (255, 245, 238)	sienna (160, 82, 45)	silver (192, 192, 192)	skyblue (135, 206, 235)	slateblue (106, 90, 205)	slategray (112, 128, 144)
snow (255, 250, 250)	springgreen (0, 255, 127)	steelblue (70, 130, 180)	tan (210, 180, 140)	teal (0, 128, 128)	thistle (216, 191, 216)	tomato (255, 99, 71)
turquoise (64, 224, 208)	violet (238, 130, 238)	wheat (245, 222, 179)	white (255, 255, 255)	whitesmoke (245, 245, 245)	yellow (255, 255, 0)	yellowgreen (154, 205, 50)

<https://www.p2crealcode.com/documentation/coloured/>



DISCLAIMER

Our proposed tools (indicators and screeners) are not investment advices but tools allowing everyone to find specific graphic configurations. Investing in the financial markets involves risks up to and including the total loss of capital.

The user of the proposed tools understands and accepts that the use of these tools is under his sole and entire responsibility. P2C Trading declines all responsibility in the use of the tools and the consequences that would result.